

## XtendDesk™ Quick Start Sheet

Coupled with its award-winning Z800 3DVisor, eMagin Corporation's XtendDesk™ software lets you work on your computer as you've never worked before. Using the Z800 3DVisor's headtracking capability, XtendDesk enables you to access multiple windows, simply by turning your head, creating an almost unlimited virtual desktop.

### Installing XtendDesk

Download the XtendDesk file and double click autorun.exe.

### Launching XtendDesk

➔ **IMPORTANT:** Place your Z800 3DVisor on the computer desk, facing toward the monitor. *Do not move it.*

Double-click the XtendDesk shortcut on the desktop or open the application from your Start Menu. After the splash screen, the application will adjust the screen resolution to 800x600 automatically. Through the configuration dialog, you can change your virtual screen's size and XtendDesk hot-key settings.



### Browsing and Scrolling

You can pan and scroll in two ways.

*Fast Mode* is available when no window is maximized, to let you quickly browse windows.

You need only move your head horizontally or vertically.

*Slow Mode* is activated if there is a maximized window or a super-maxed window on the desktop so that you can read things in detail within that window.

To stop scrolling content in the slow mode, simply face straight ahead, directly over the keyboard. (*Note:* In slow mode, scrolling is application-based and may depend on the nature of the content. The application will automatically choose the scroll method for some commonly used applications such as Microsoft Word, Excel, etc.)

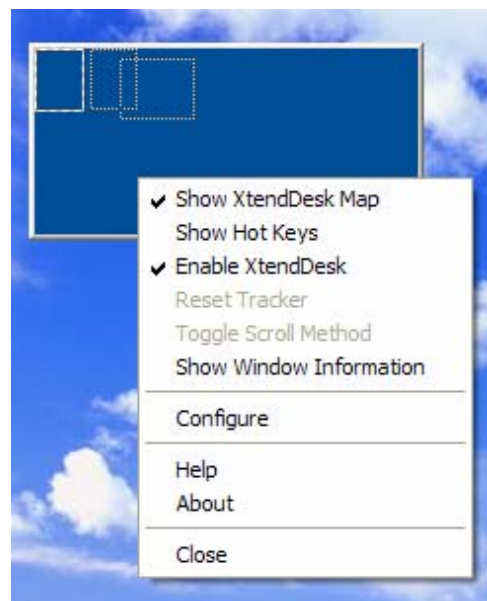
In either mode a map window will remain in view, showing how many windows are open and your position.

### Resetting XtendDesk

To adjust your head to a comfortable position in the Fast Mode or to decide the head position where you want to stop scrolling in the Slow Mode, you can use the simple Reset Tracker hot key. Once you have repositioned your head, simply press the hot key combination again.

### Window Information

If "Showing Window Information" is enabled, you can move the mouse cursor to any frame in the map window to display



that frame's information will be displayed in the middle of your screen.



### Configuring Hot keys

To configure a hot key, open the configure dialog box (right click for the drop-down menu)

and choose the Hot Keys tab. Choose the action you want to redefine, click the Edit button, then press a key or sequence of keys to signal the action.

Your key input will be displayed on the screen. When you are finished, click the Apply button.

<b>XtendDesk™ HOT KEYS Default Settings</b>	
<b>Ctrl + F1</b>	Display hot keys definition
<b>Win + Home</b>	Reset tracker
<b>Scroll Lock</b>	Enable/disable tracker
<b>WIN + Num Lock</b>	Lock/unlock current active window on the screen
<b>Ctrl + Space</b>	Toggle scroll method be used in a maximized window
<b>Ctrl + Tab</b>	Super/un-super maximize the current active window

### User Notes