

Z800 3DVisor Lab Tool Quick Start Sheet

eMagin's Lab Tool software lets developers test and save settings for the Z800 3DVisor at a more detailed level.

Installing Lab Tool

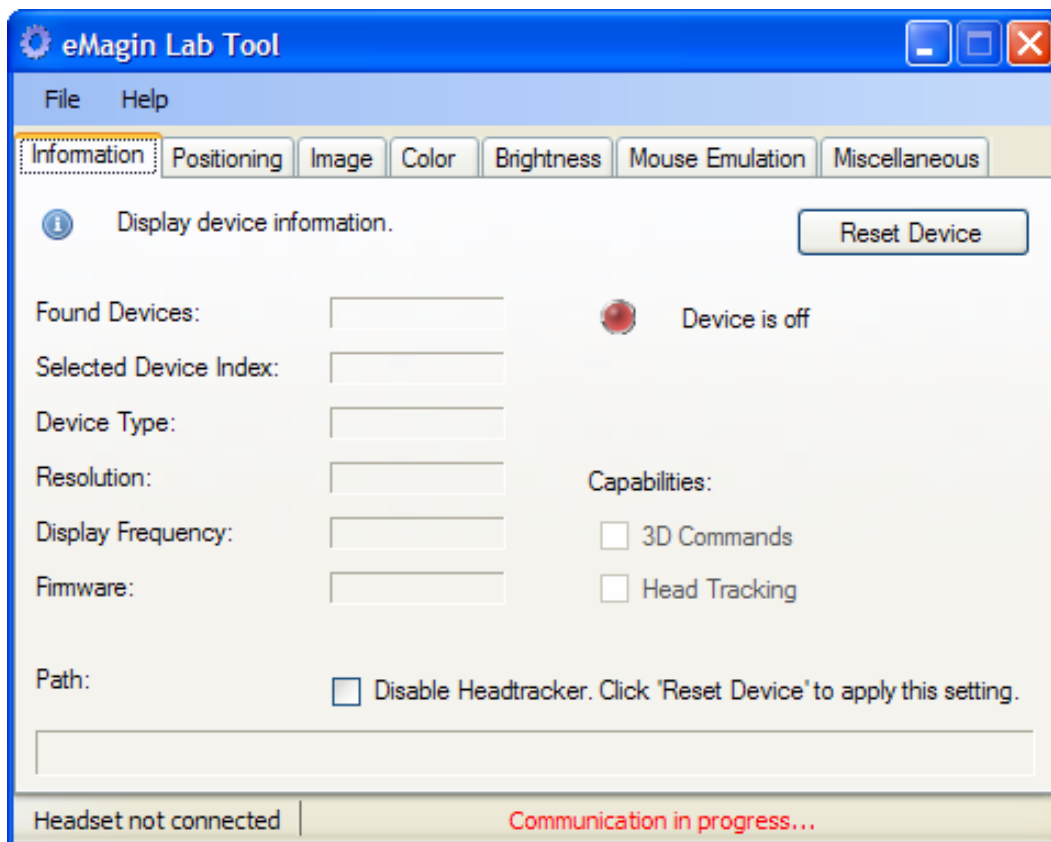
Once you have downloaded the files from 3dvisor.com, double click the autorun.exe. You will have the choice to add an alias to your desktop. eMagin's Lab Tool software enables you to do detailed settings on your 3DVisor:

- Independent image positioning on each display
- Independent image adjustment for each display
- Independent color adjustment in red, green, and blue for each display

- Independent brightness adjustment for each display
- Detailed mouse emulation, including sensitivity on the x- and y-axes and the ability to invert either or both axes
- Separate adjustments for using a second monitor, forcing 3D mode, toggling between left and right displays, cycling through brightness levels, setting screen-saver timeouts.

Launching Lab Tool

- **IMPORTANT:** Place your Z800 3DVisor on the computer desk, facing toward the monitor. *Do not move it.*



Double-click the Lab Tool shortcut on the desktop or select it in the Start Menu. If the application detects and initializes the Z800 3DVisor correctly, the main window should display information about the Z800 3DVisor. If not, double check your 3DVisor's connections.

Using Lab Tool

As you move through the menu tabs in the Lab Tool software, you can experiment with detailed controls for every aspect of your Z800 3DVisor's performance. (Note: You can also make so many changes that getting back to the original settings may prove difficult.) Each tab includes a button to restore the default settings for the function. In addition, you will also have the option to reset to the original settings under the Miscellaneous Tab.

Using the Miscellaneous Tab

The last tab lets you move through several controls, including enabling an external monitor and controlling the 3D mode. You can also toggle the left and right images to test the 3D signal and cycle through the brightness levels.

More important though is that this panel lets you reset the EEPROM to its original settings.

Equally important, this screen enables you to set your screensaver for those times when you are using an external power source and your power saver for those times when you are using your laptop's battery.

The screensaver effectively prevents the burn-in issues common to all emissive displays.

